



## Product description

**Adva-Nanoseal Premium** is a high-performance top-surface penetrating sealer. Its water-based formulation with low VOC content, durable and transparent in color, imparts excellent water and oil repellency to the natural stone surfaces and high stain resistance properties. **Adva-Nanoseal Premium** does not change or affect the original look of the treated stone. **Adva-Nanoseal Premium** can be applied over hard surfaces, including porous and dense surfaces such as natural stone surfaces, tiles, brick, concrete, and grout. Adva-Nanoseal Premium allows the transmission of moisture vapor in the stone microstructure.

## Product features

- Water-based formulation with low VOC content.
- Formulated by Nanotechnology chemistry.
- Excellent water and oil repellence.
- Anti-weatherizing properties.
- Long- lasting durability.
- Excellent anti-stain properties.
- High UV resistance.
- Easy to apply by brush, mop, roller, or dipping technique.
- Suitable for various surfaces, including dense & porous surfaces.
- Ideal for interior and exterior applications



## Where to use & limitations

- High quality sealer for all types of natural stones such as marble, granite, travertine, limestone, sandstone, slate, agglomerates, terracotta, etc. and absorbent cementitious-based substrates.
- Can be applied on non-glazed or porous tiles, masonry, brick, interlock and concrete pavers.
- This product is not a waterproof membrane. Use a waterproof membrane if required as per the project requirement.
- Do not allow the product to come in contact with any non-recommended surface.
- Do not allow the product's residues to remain or dried on polished stone's surface, glass or aluminum.
- Clean the excess with a damp sponge or cotton cloth after product application. If dry white residues occur, scrub the stone surface with water and a white nylon pad.
- Do not apply when the surface temperature is below 8°C.

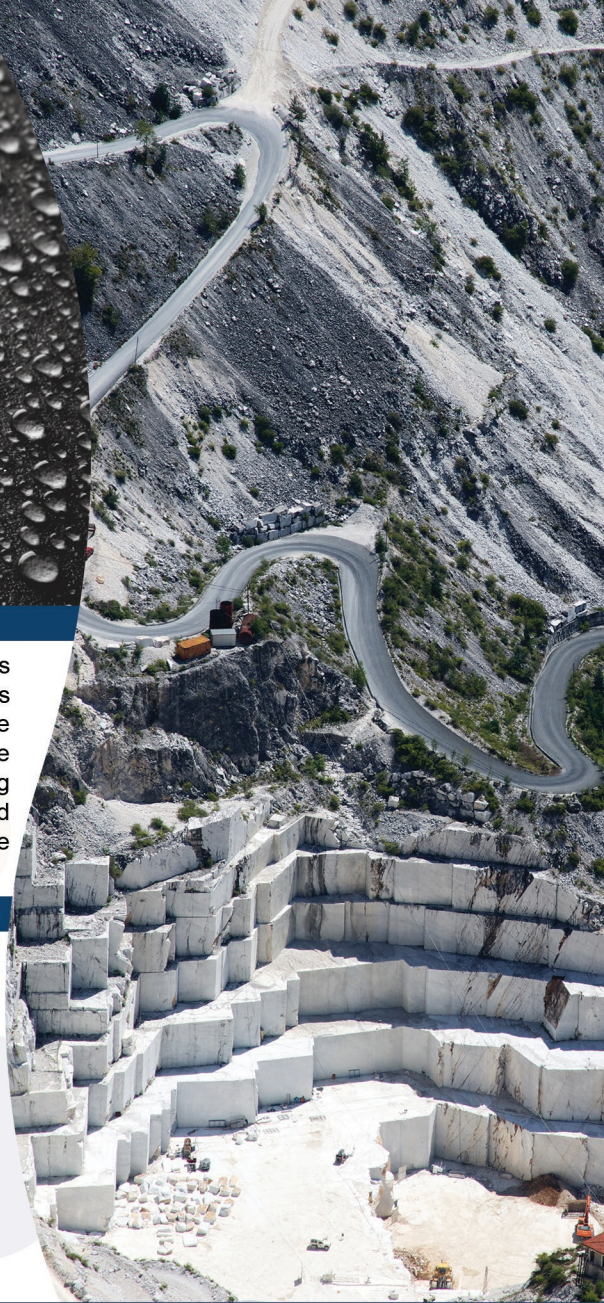
## Surface preparation & Application

### Safety instruction for the application process

- In general, sealer material is irritant to the eyes and skin. Avoid contact with eyes and skin. In case of contact with eyes, rinse immediately with plenty of running water and seek medical advice. Use suitable protective gloves, PPE and goggles.

### Application procedures

- Clean the surface of the stone or tile or slab by removing any dust and residues that could adversely affect sealer penetration and performance.
- Make sure that the surface is completely dry and free from any dampness then start to apply the product evenly and continuously on the surface of the stone or tile using a saturated brush, mop, roller, airless pump or low-pressure garden-type sprayer.
- Double coats are highly recommended in X & Y direction, assuring 100 % coverage and porous surfaces may require further third coat application. The product can also be applied by immersing (dipping technique) the material in it for roughly 20-30 seconds.





- Product residues must be removed & cleaned by dabbing the excess material with cotton towels, to avoid pooling of the product on the surface.
- Sealer should be allowed to cure 24-48 hours (temperatures between 20 °C and 40 °C). Ensure that the application area is well-ventilated during the product application and until the stone surface is completely dry.
- For use as a pre-seal prior to the grouting process, apply double coats to the edges of the stone and keep the applied sealer for curing before grouting. Sealing all four sides is recommended for maximum protection. Consult Advamix's technical team for the installation recommendations regarding substrates and conditions not listed.

#### Cleaning

- **Adva-Nanoseal Premium** cleans easily with fresh water immediately after use. Do not allow dried residues to remain on the polished surface, glass or aluminum.

#### Handling and storage

- Keep stored in the original container only.
- Close the container tightly after each use.
- Store and use between temperatures range of 10°C and 40°C.
- Factory sealed original containers of this product are guaranteed to be of good quality for two (2) years if stored off the ground in a dry area, at standard storage conditions, temperature > 0°C and < 40°C.

#### Consumption

- **Adva-Nanoseal Premium** consumption will strongly vary and depending on the stone density, surface porosity & absorption, final texture, site conditions, application method and numbers of the applied coat. Approximately coverage will be in the range of 30 m<sup>2</sup> to 120 m<sup>2</sup> per 3.785 L (US gallon).

#### Warning

- Keep out of reach of children.
- Protect can from frost & sunlight.
- Do not disperse into the environment after use.
- Although the technical details and recommendations contained in TDS correspond to the best of our experience and knowledge, all the above information must, in every case, be taken as merely indicative and subject to confirmation after long-term practical application; for this reason, anyone who intends to use the product must ensure beforehand that it is suitable for the envisaged application. In every case, the user alone is fully responsible for any consequences deriving from the use of the product.

#### Technical Properties

- Density (kg/l) : 1.00- 1.04
- Consistency : liquid Product
- Colour : transparent / yellowish
- Application temperature : from +5°C to +40°C
- Stain resistance : Excellent
- Cure time : 12-48 hours at +23°C and 50% R.H.

#### Note

All technical data stated in this Product Data Sheet are based on laboratory tests. Actual measured data may vary due to circumstances beyond our control. Please note that as a result of specific local regulations the performance of this product may vary from country to country. Please consult the local Product Data Sheet for the exact description of the application fields. Information on this datasheet is subject to change without notice and should not be used for writing specification. For additional information on specific applications, please contact Advamix L.L.C. The information contained herein, particularly recommendations for the handling and use of our products, is based on our professional experience. As materials and conditions may vary with each intended application, and thus are beyond our sphere of influence, we strongly recommend that in each case sufficient tests are conducted to check the suitability of our products for their intended use. Legal liability cannot be accepted on the basis of the contents of this data sheet or any verbal advice given, unless there is a case of wilful misconduct or gross negligence on our part. This technical data sheet super sides all previous editions relevant to this product. Advamix reserves the right to change the properties of its products. The proprietary rights of third parties must be observed. All orders are accepted subject to our current terms of sale and delivery. Users must always refer to the most recent issue of the local Product Data Sheet for the product concerned, copies of which will be supplied on request.



Advamix LLC, Address: Corner No. 1, Plot 0865, Al Jurf Industrial Zone 2, Ajman, UAE.

Tel: +971 562041334, +971 561074277

Email: info@advamix.com, Website: Advamix.com